



New Water

What is 'New Water' ?

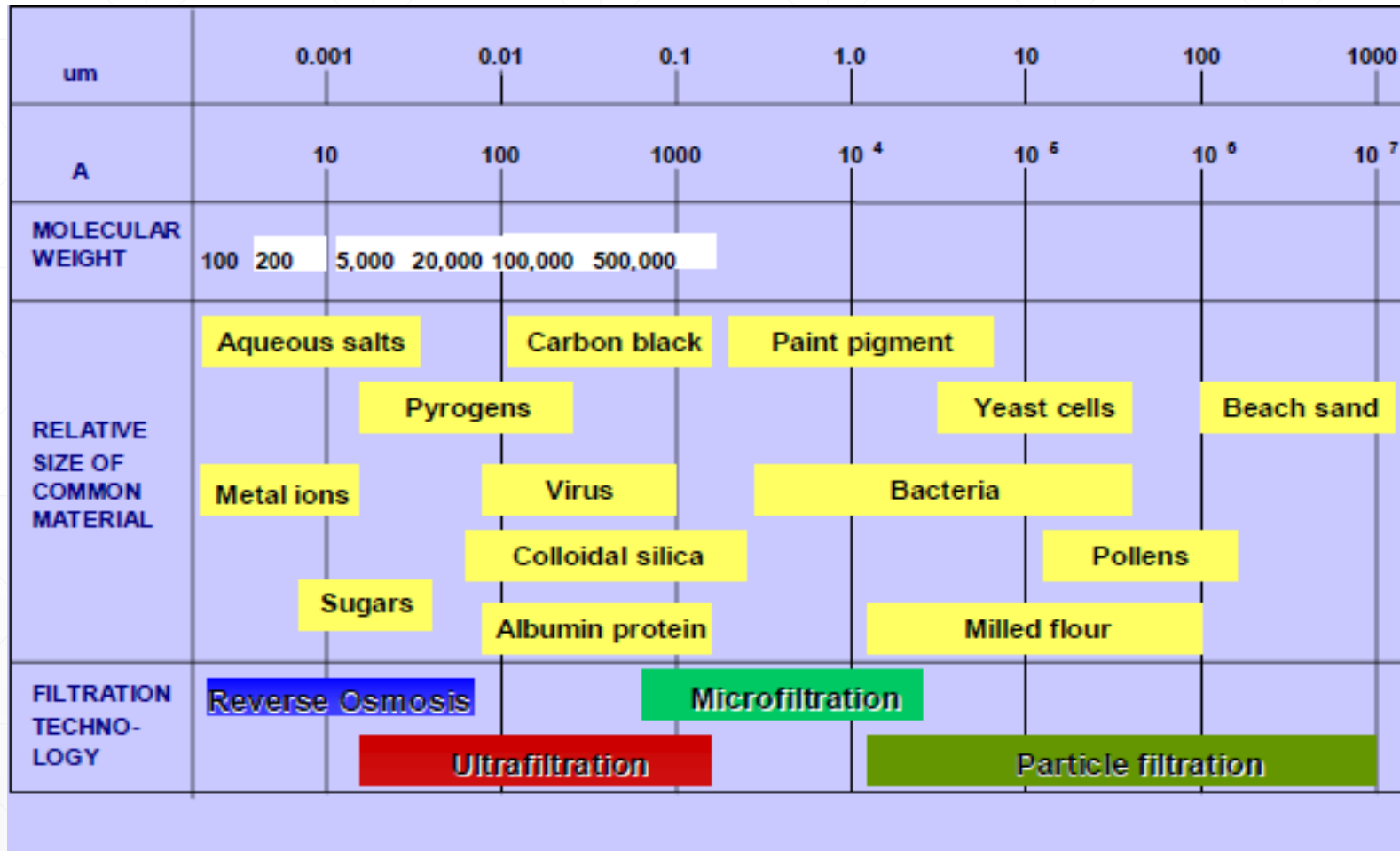
- The term 'New Water' refers to water which is produced by filtering and processing waste water
- The aim is to reduce dependency on ground water and reverse osmosis.



What is 'New Water' ?



What is 'New Water' ?



Why 'New Water' ?



Who can use 'New Water'?

- New water will be classified as second class highly polished reclaimed water, or Non-Potable Water. As such its uses will be limited by law.
- Mainly recommended for agricultural irrigation and selected industrial usage.
- Applications will be analysed by a board prior to granting access to New Water.

Project Description – Phase 1



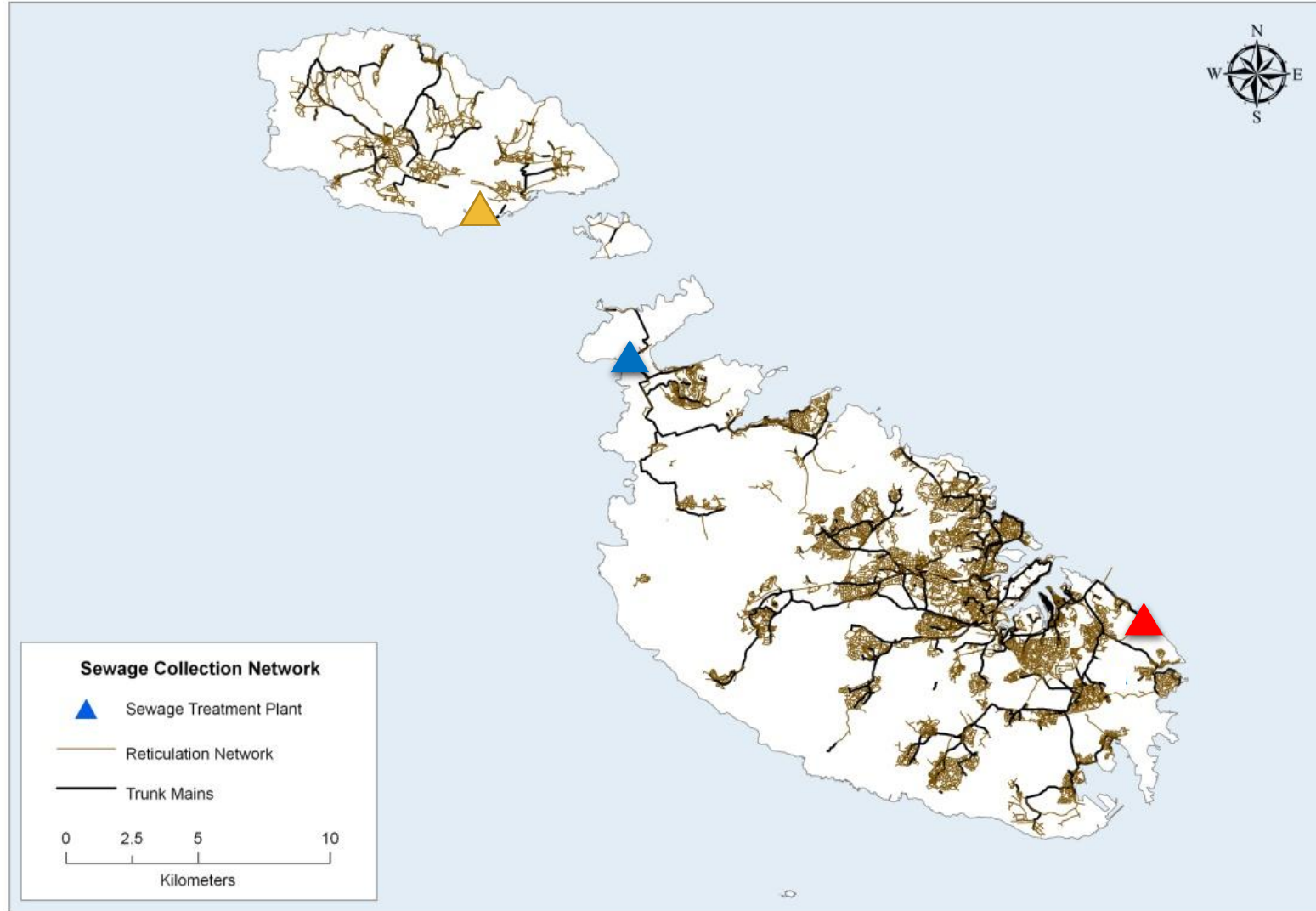
Project Description – Phase 1



Gozo Plant



North Plant

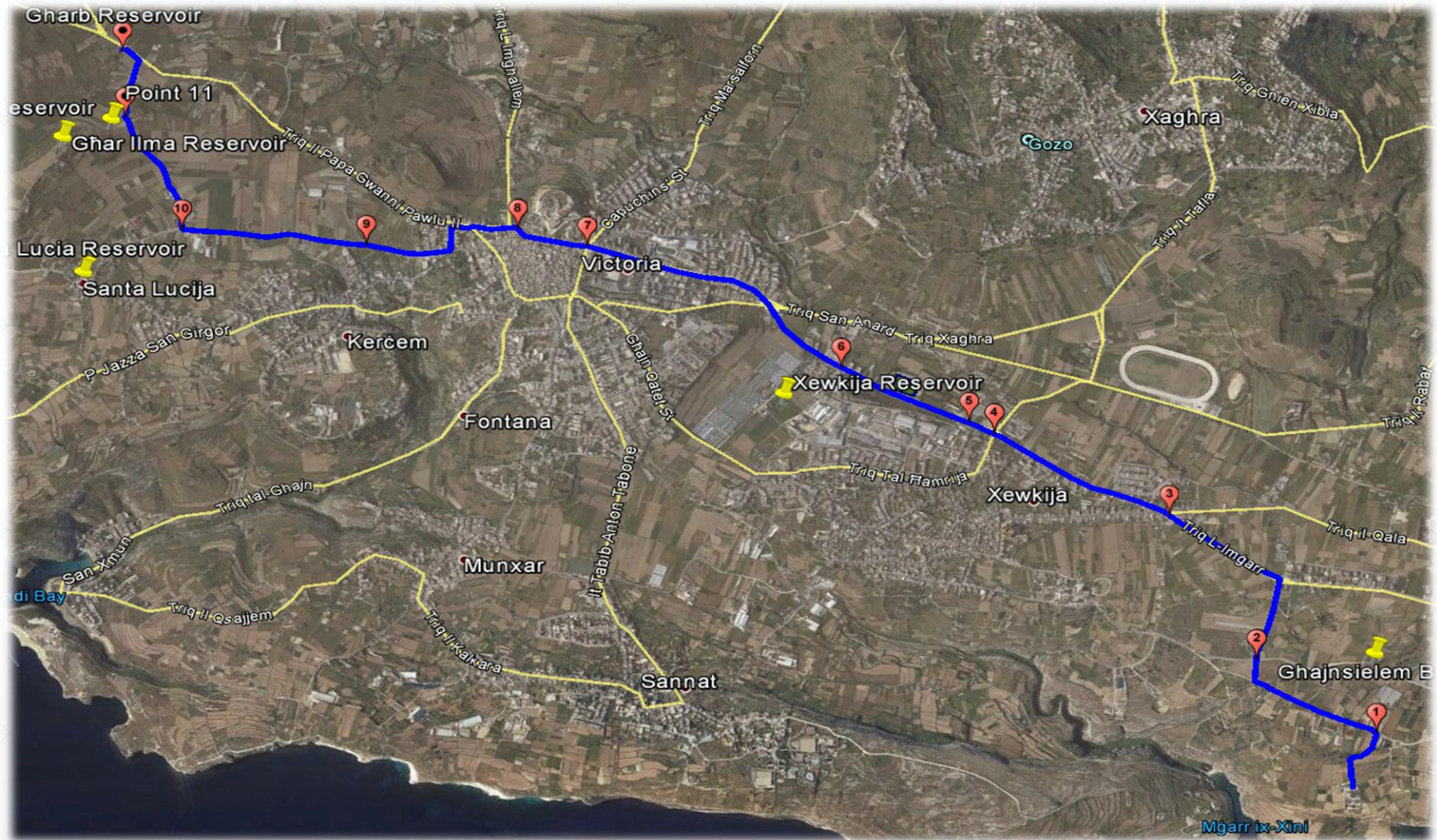


South Plant

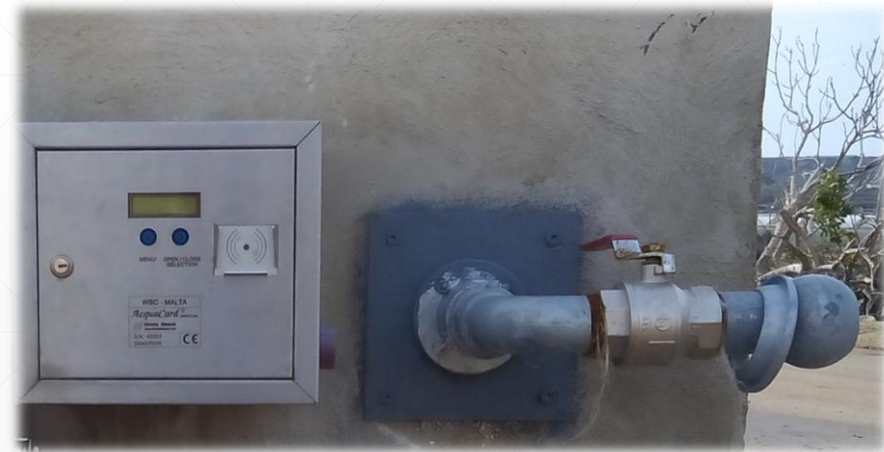
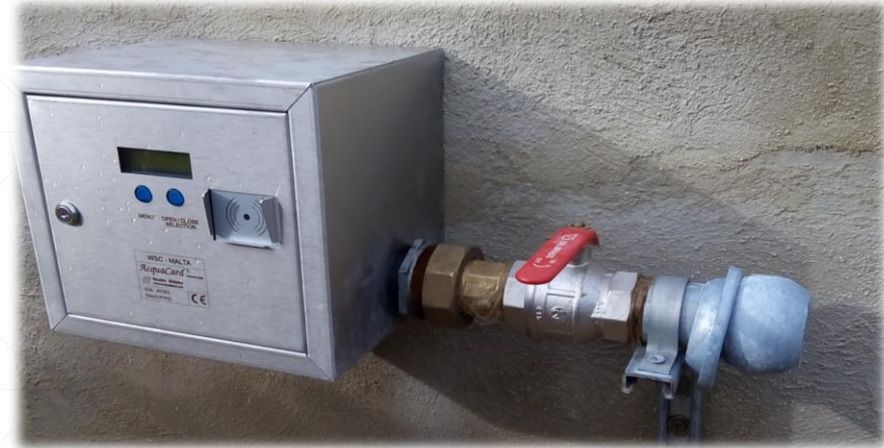
Project Description – Phase 1



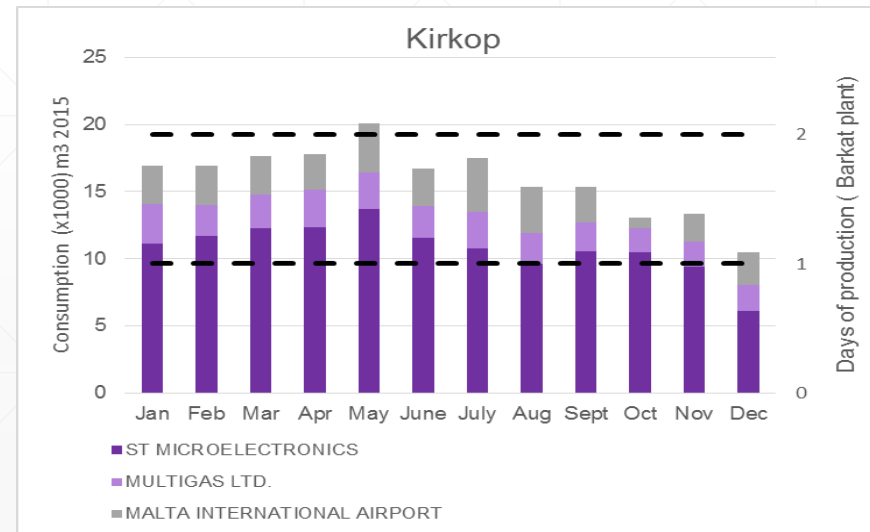
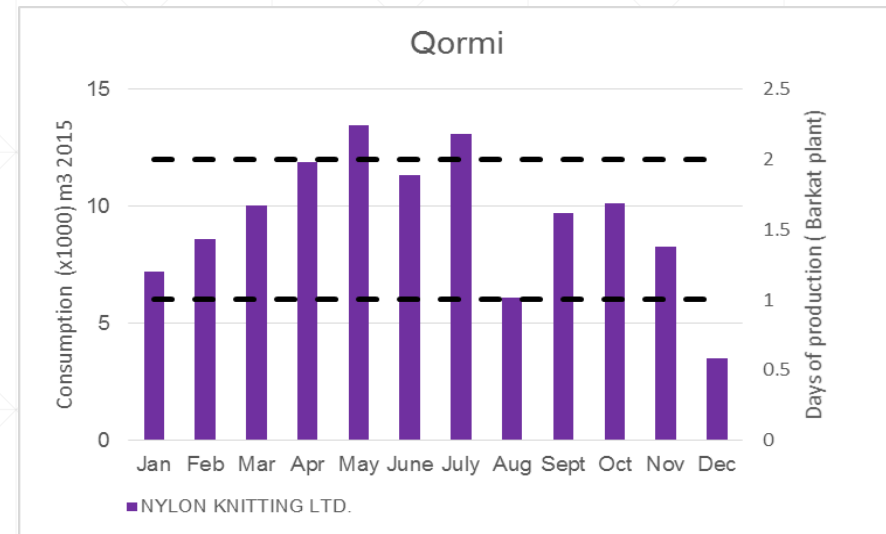
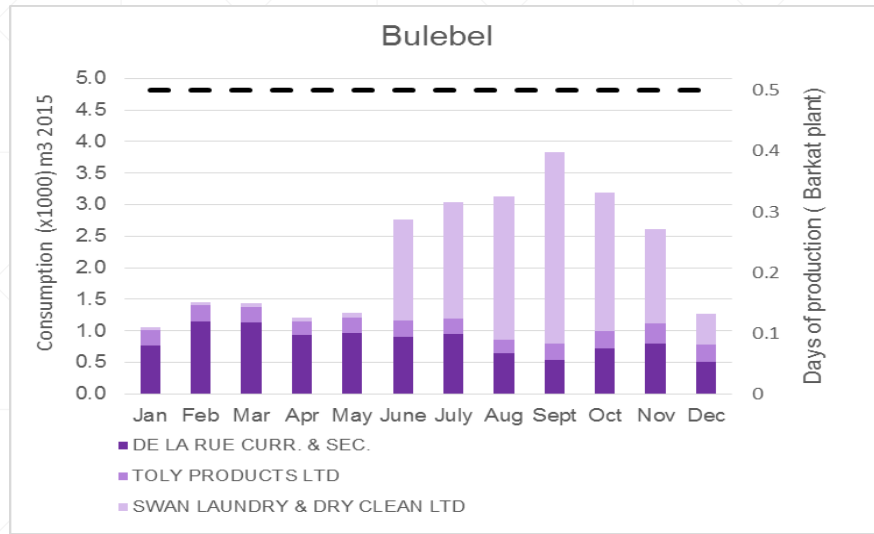
Project Description – Phase 1



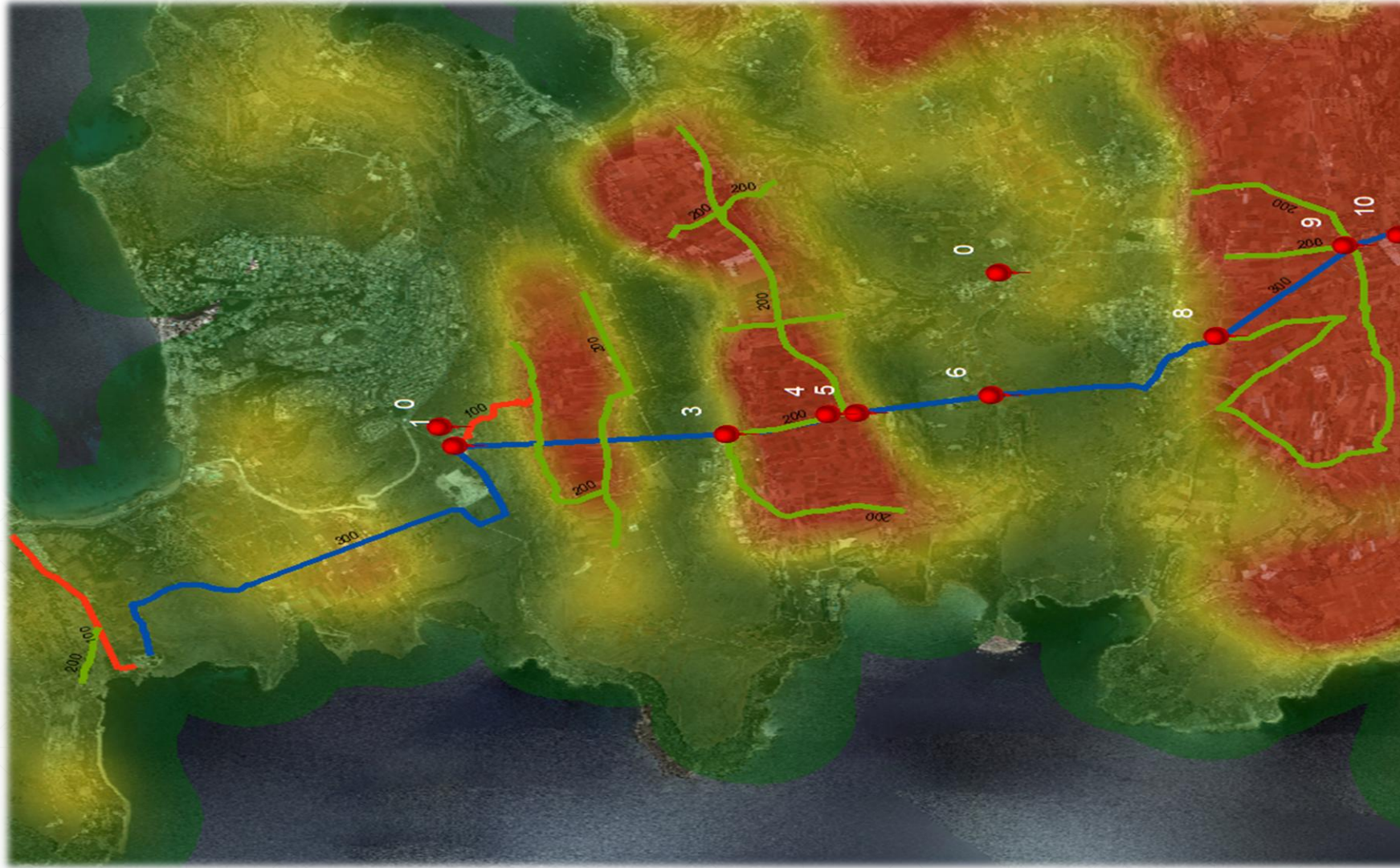
Project Description – Phase 1



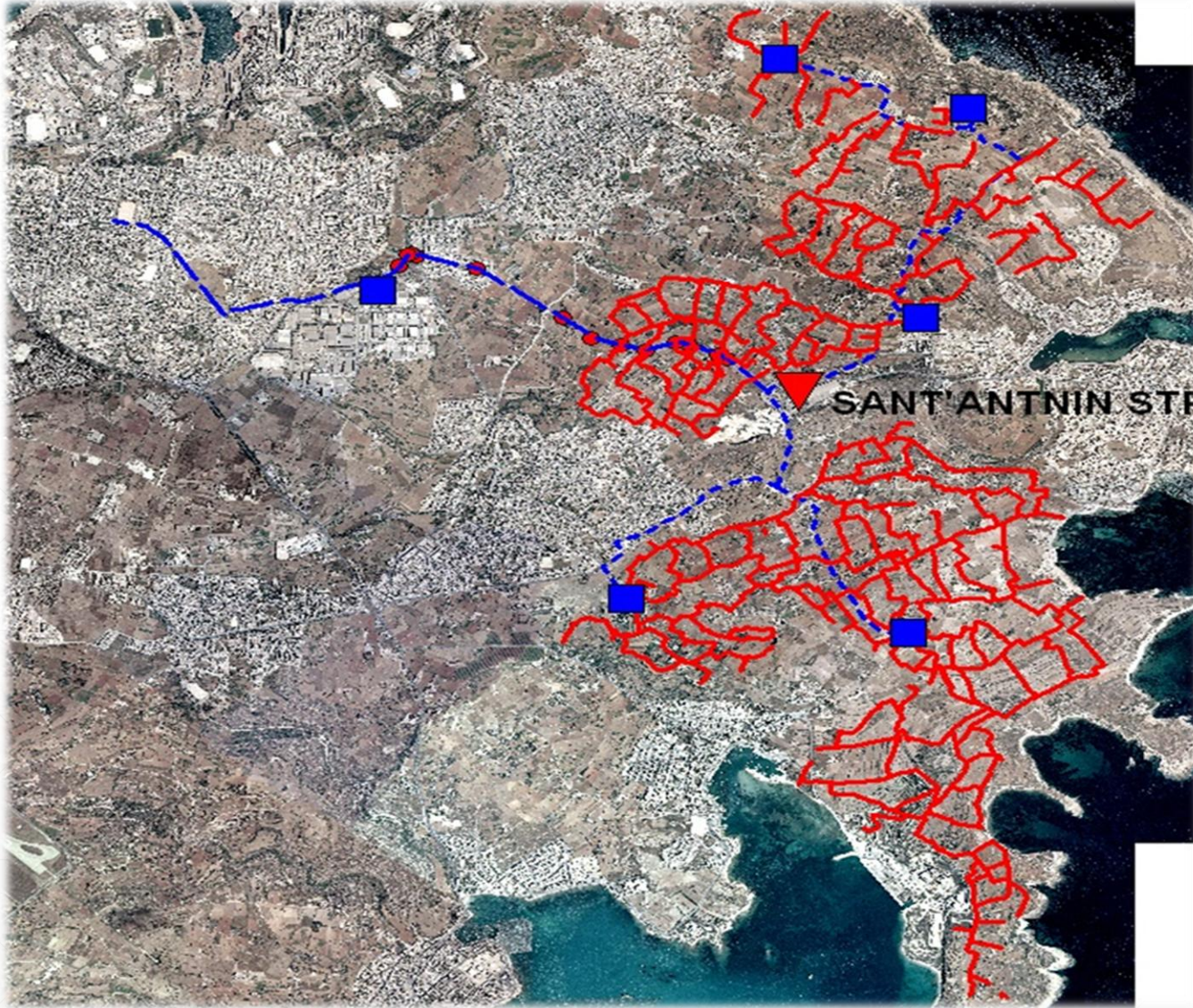
Project Description – Phase 1



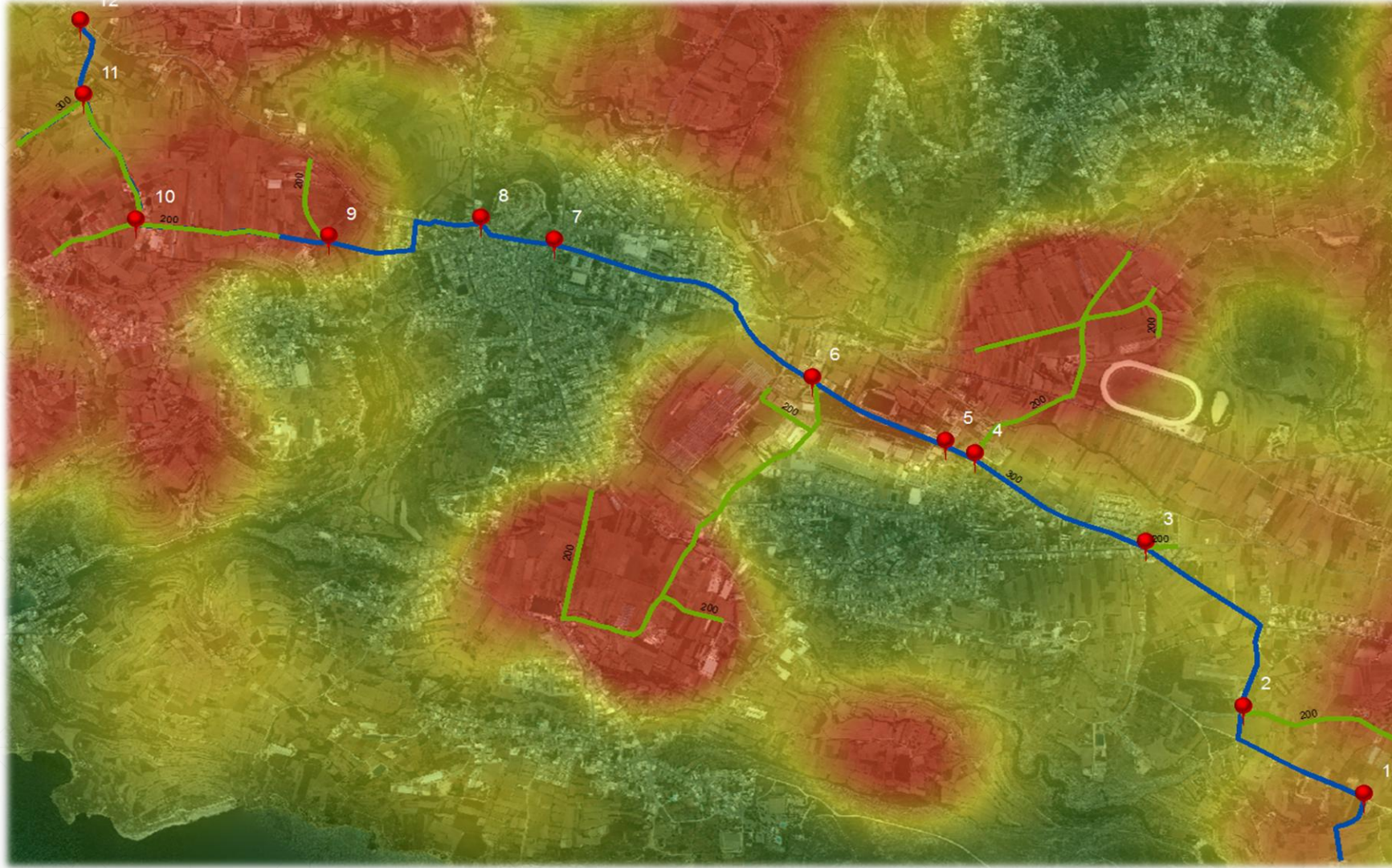
Project Description – Phase 1



Project Description – Phase 1



Project Description – Phase 1



Project Description – Phase 2

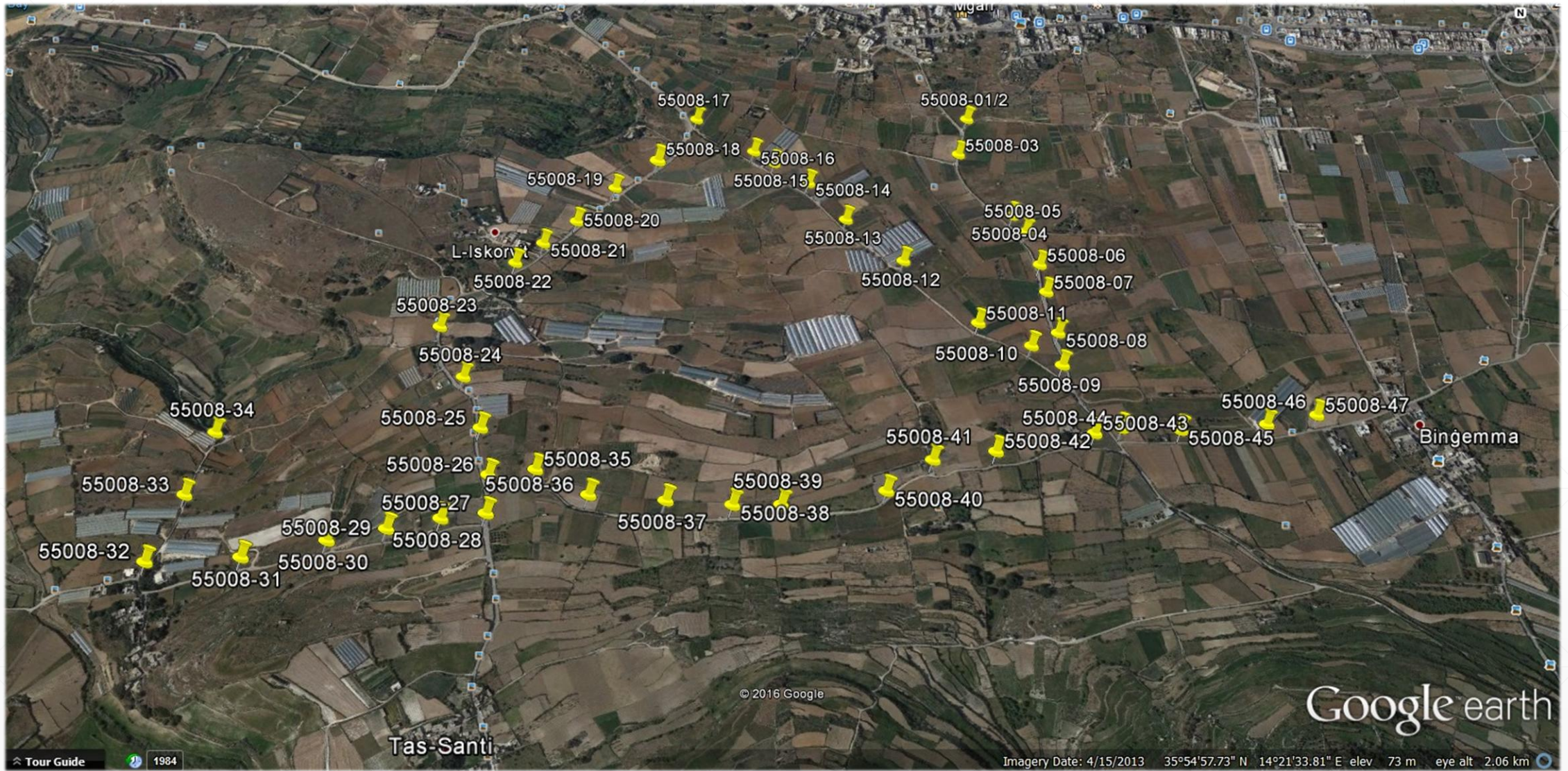
Distribution Networks Actions 2014 - 2020

- New Distribution Network for Gozo – 8 km
- New Distribution Network for the North Region – 16 km
- New Distribution Network for the South Region – 29 km
- Restoration of South Area Reservoirs
- Horizontal Directional Drilling (HDD) supplies to South Reservoirs
- Construction of a New 6400m³ Reservoir in Gozo

Project Description – Phase 2



Project Description – Phase 2



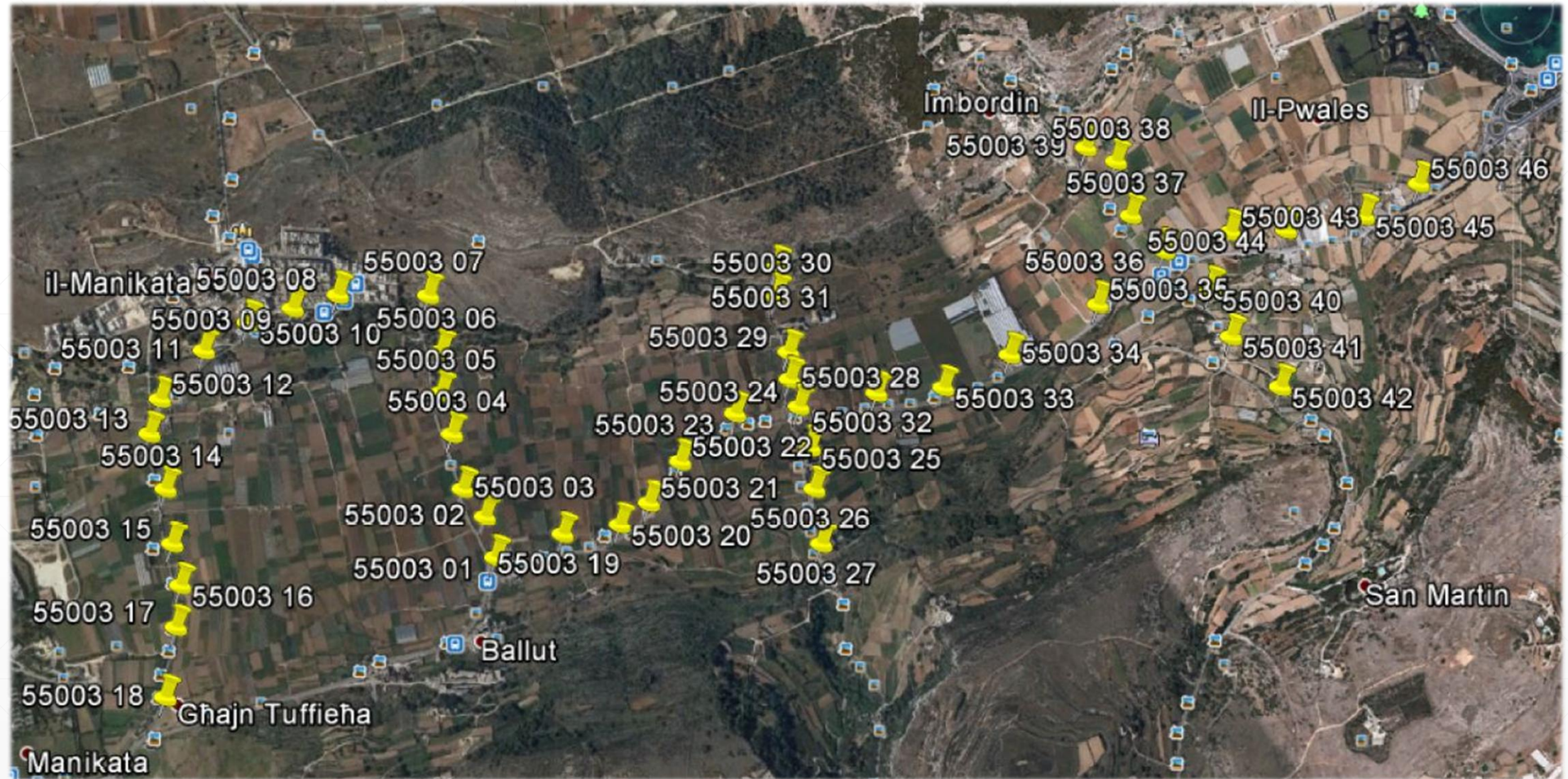
Proposed 'Bingemma' Network (North)

Project Description – Phase 2



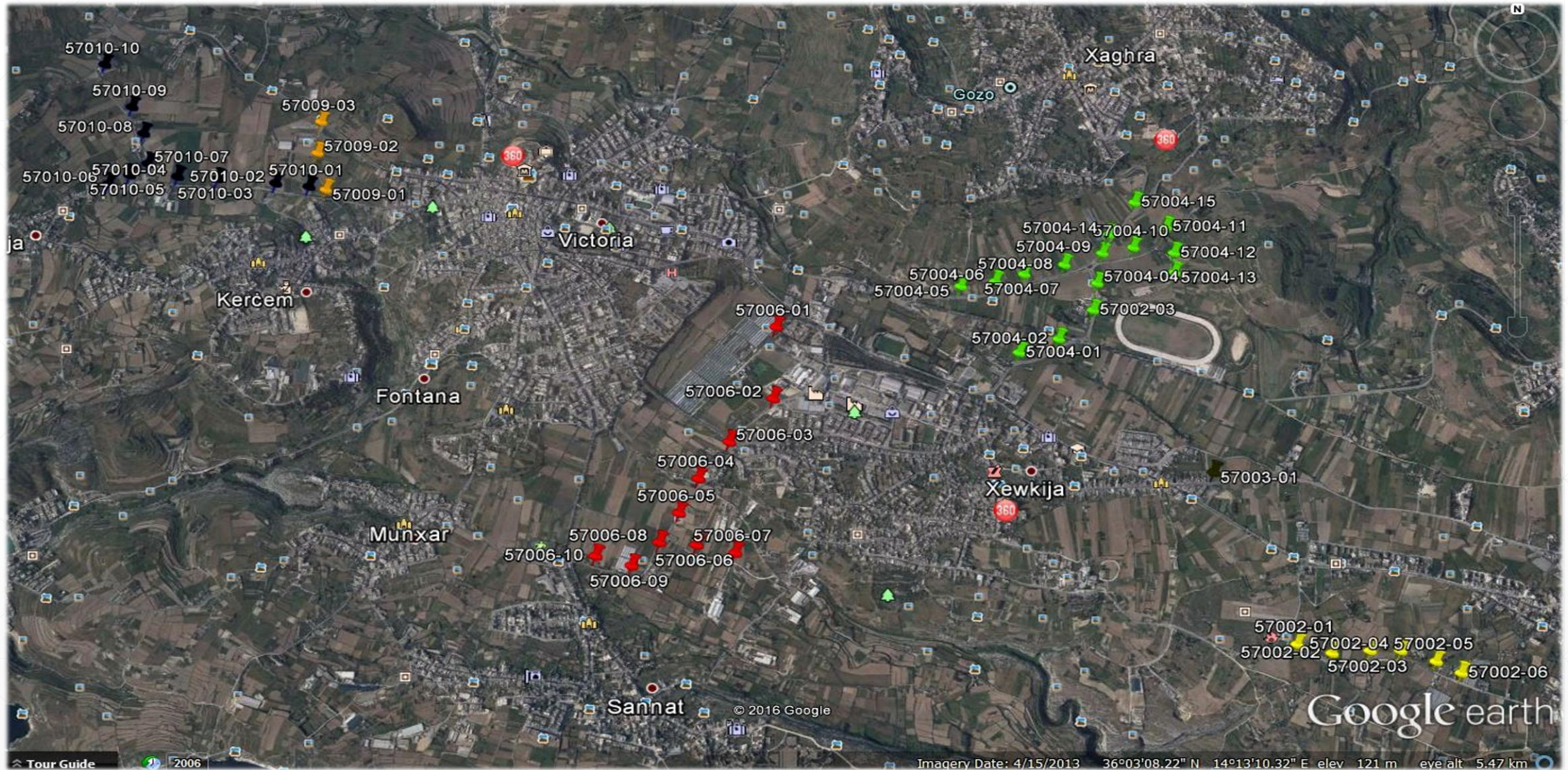
Proposed 'Mizieb' Network (North)

Project Description – Phase 2



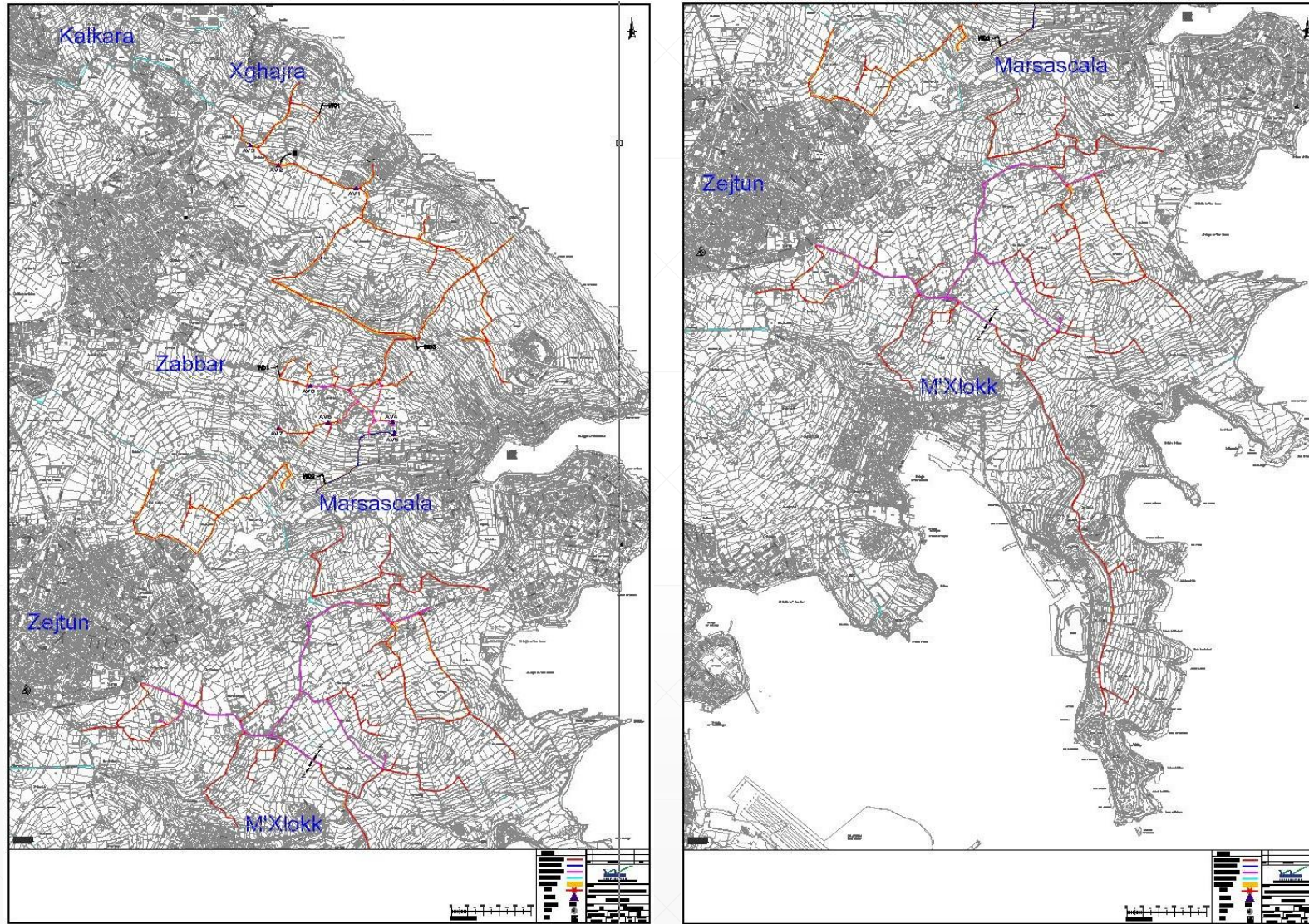
Proposed 'Pwales' Network (North)

Project Description – Phase 2



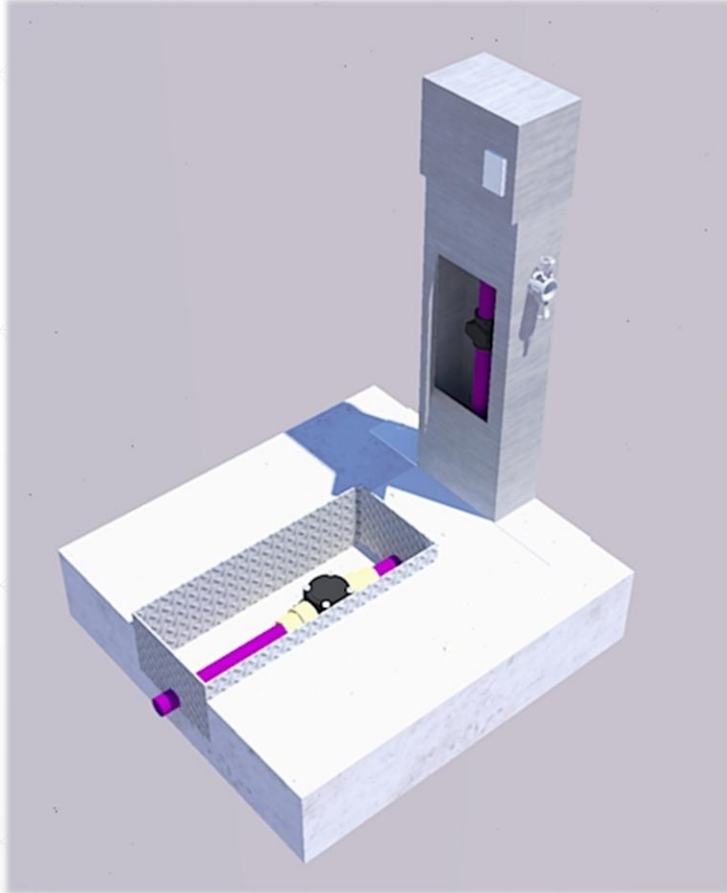
Proposed Network (Gozo)

Project Description – Phase 2



Proposed Network (South)

Project Description – Phase 2



Proposed Water Dispensing Points

Project Description – Phase 2

Network Cost Estimates

	Length m	Euro K
Manikata / Pwales	6,200	1,260
Mizieb	3,800	960
Mgarr / Bingemma	6,200	1,853
Total North	16,200	4,073
Ghajnsielem	750	115
Kercem	2,550	463
Sannat	2,450	363
Xaghra / Ta Hamet	2,750	505
Total Gozo	8,500	1,446
Bidni	2,900	646
San Anard	6,800	948
Xghajra	1,500	271
Habel I-Abjad	8,500	1,377
Tas-Silg	9,300	1,525
Total South	29,000	4,767
Total	53,700	10,286

Thank You!