

# LIFE Eau&Climat project

Supporting long-term local decision-making for climate-adapted Water Management

Dr Sonia SIAUVE, project coordinator

*Office International de l'eau*



**20<sup>th</sup> International Conference  
Europe-INBO**

# Adaptation to climate change at local scale, in France?

National scale:

**2<sup>nd</sup> National Plan for Adaptation to Climate Change**  
(58 actions) 2018-2022

declined at the  
regional scale

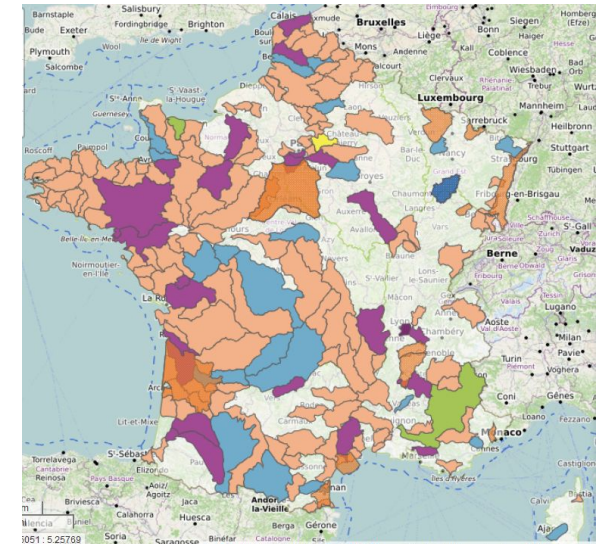
**Basin plans for ACC**



WFD implementation  
**12** River Basin Districts

=> 12 SDAGE (Master planning schemes for water management)

How is it declined at the  
local scale  
**PTGE, HMUC**  
(territorial strategies)



Sub-river Basins

=> **193** SAGE (Schemes for water management)

# Once upon the time .. The LIFE Eau&Climat project



French National event (2018):

« Any needs at local scale for adapting to climate change? »



coordinator

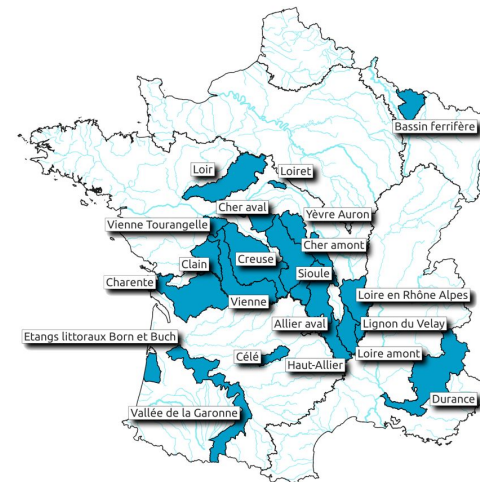
5 scientific partners



9 territorial partners



|                                 |                            |
|---------------------------------|----------------------------|
| <b>3,7 M €</b><br>Budget        | <b>2 M €</b><br>EU funding |
| <b>4 years</b>                  | <b>14 partners</b>         |
| <b>1<sup>st</sup> Sept 2020</b> | Start                      |



**21 SAGE (>10%)**  
Involved in the project

# 4 NEEDS expressed by local water managers

Tools to design tailored adaptation

↪ Action C1

Data easily accessible

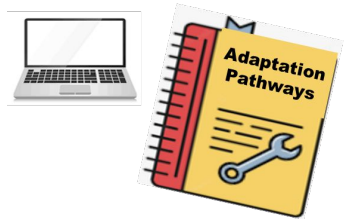
↪ Action C3

Support from scientists

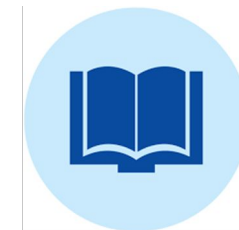
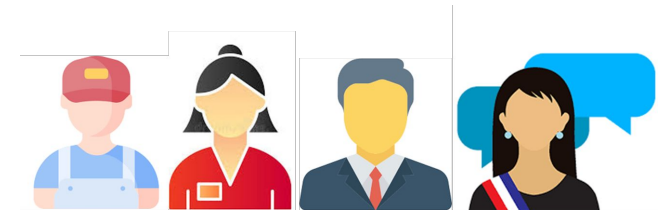
↪ Action C4

Advises to mobilise actors

↪ Action C2



White paper on the DO and DON't for modelisation at local scale



Report of recommendations



toolbox

# 4 main themes & 21 demonstration actions at local scale



**C1 : Development and validation of 2 tools to support local decision:**  
 1- diagnosis of a territories vulnerabilities linked to CC  
 2- adaptation pathways

test of the 2 tools in 3 river basins

- 2 ETABLISSEMENT PUBLIC LOIRE
- 5 EPTB Vienne  
Établissement Public Territorial de Bassin
- 14 Syndicat Mixte Bassin Versant des Lacs du Born

**C2 : Stakeholders mobilisation – practices analysis and recommendations**

- 6 EPTB Vienne  
Établissement Public Territorial de Bassin  
Réalisation d'un guide et organisation de réunions par SAGE
- 9 EPAGE Loire-Lignon  
Création de supports de comm et organisation de réunions publiques et techniques
- 12 Smavd DURANCE  
Nomination d'1 Ambassadeur Climat pour sensibiliser et communiquer sur le CC
- 15 Syndicat Mixte Bassin Versant des Lacs du Born  
Réalisation d'une étude prospective pour définir une stratégie d'adaptation concertée
- 17 smeag  
Création d'un réseau de référents CC pour favoriser l'émergence de dynamiques locales
- 20 Syndicat du bassin Célé-Lot médian  
Sensibilisation aux économies d'eau : récupération eau de pluie, formation sur les pratiques herbagères adaptées, diagnostics hydrauliques de plans d'eau

**C3 : Ease the access to hydroclimatic data**

- 3 ETABLISSEMENT PUBLIC LOIRE  
Etude de gestion quantitative (HMUC) pour la mise en œuvre du CTGQQ
- 8 GrandEst  
ALCALI CHAMPAGNE ARDENNE LORRAINE  
L'Europe s'avance chez nous  
Création d'un observatoire citoyen et identification des données/indicateurs possibles
- 10 EPAGE Loire-Lignon  
Suivi de cours d'eau par installation d'échelles limnimétriques et de repères d'étiage
- 13 Smavd DURANCE  
Utilisation d'images et de données satellitaires pour améliorer l'irrigation agricole
- 18 smeag  
Etablissement de nouveaux indicateurs CC pour alimenter le tableau de bord SAGE
- 20 Syndicat du bassin Célé-Lot médian  
Suivi de plans d'eau par installation de sondes et formation des propriétaires

**C4 : Reinforce exchanges between pairs and between water managers and scientists**

- 1 EPTB Charente  
Établissement Public Territorial de Bassin Charente  
Modélisation hydrologique du BV (transfert superficiels et souterrains)
- 4 ETABLISSEMENT PUBLIC LOIRE  
Organisation de journées d'échanges chercheurs-gestionnaires
- 7 EPTB Vienne  
Établissement Public Territorial de Bassin  
Mobiliser les chercheurs pour réaliser une étude prospective (restitution cartographique)
- 11 EPAGE Loire-Lignon  
Etude globale HMUC et définition d'une stratégie quantitative
- 16 Syndicat Mixte Bassin Versant des Lacs du Born  
Développement d'un outil de modélisation adapté aux plans d'eau littoraux
- 19 smeag  
Etude socio-économique de l'impact des démarches d'adaptation au CC (projet PYGAR)





## Action 3: concerted quantitative management study « Hydrology, Environments, Uses, Climate »

Objective : testing the climate data service access in 4 sub river basins (“ French SAGE”)

Mobilisation of **updated climate projection data** in order to improve the study of the impact of climate change on the management of the Naussac and Villerest hydraulic dams (see photo)

**Increase stakeholders awareness** (communication and meetings) on the actual and future impact of climate change on water resources



Source : <https://www.eptb-loire.fr>



# Action 8: Citizen observatory to create a territorial spirit to face future climate change impacts



Objective : testing the climate data service access in 4 sub river basins (“ French SAGE”)

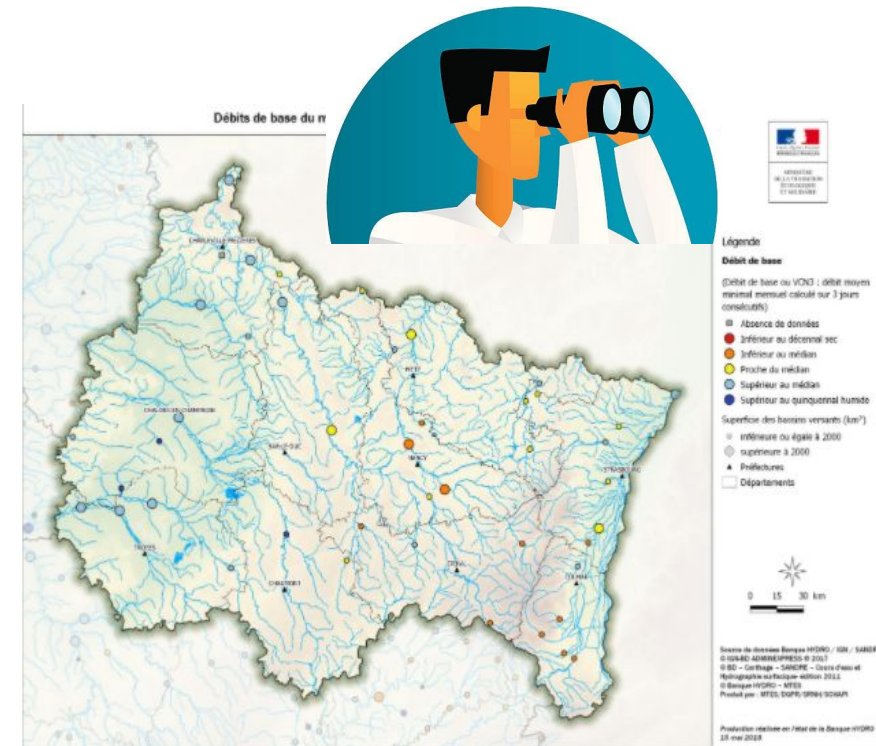
This territory (Eastern France) is not yet really impacted by CC.

- Need to mobilize all the actors: water managers, policymakers and citizens with the support of scientific to bring evidence base

Idea: **Create a “territory spirit” about the topic of CC**

How? By **creating a citizen observatory**:

- Identification of relevant data to be collected by citizen
- Identification of usefull indicators calculable with these data
- Creation of a web interface and a mobile app for results vizualisation



Source : DREAL Grand-Est



# Action 10: pedagogical water level gauges installation under bridges

Objective : assess the effects of climate change on river flows & raise citizen awareness

What? Installation of **water level gauges and low-water markers** on certain tributaries of the Lignon river

Why? **Multiple purpose:**

- **For water managers:** measuring water levels (which can be converted into flows) and warning of the severity of low water
- **For all river users:** information availability (water level, temperature) with explanations on how to interpret data (explanatory panel)
- **For all the citizen:** creation of a water observatory centralising all the data on the catchment area to allow visualization and communication



Source : EPAGE Loire Lignon



Adaptation to climate change for water resources management needs:

- ❖ To involve all the stakeholders with **concerted actions**
- ❖ **To explain again and again** what is climate change and what are the current and probable future impacts on resources:
  - With simple words (need of scientific mediations to be pedagogical)
  - Based on robust scientific knowledge and figures (with an explanation of the uncertainties)
- ❖ **To facilitate access to hydro-climatic data** to carry out impact studies
- ❖ To move from thinking to action with **local adaptation plans legally binded**

# Notes – exchange with the room



# Creation of a Group of European Actors



## Co-financement EU

Echanges constants avec la Commission Européenne

**Comité Européen d'Evaluation (CEV)**  
groupe d'experts européens membres de l'Euro-RIOB  
allant suivre les résultats du projet

### Opportunity to take part

Interested in being an expert in that group?

-> **make yourself known!!**

## Autres acteurs français

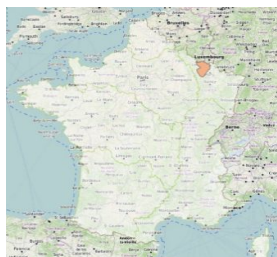
Nombreux contacts pendant le projet

## Groupe de Travail Institutionnel (GTI)

MTE, DEB, ADEME, OFB, 6 AE, 2 ODE, la Région Nouvelle Aquitaine, le MAA et 1 Chambre d'agriculture

## Consortium du projet

14 partenaires  
5 scientifiques et 9 territoriaux



# Thank you for your attention

## QUESTIONS ?

For more information, please contact:

Dr Sonia SIAUVE (OiEau), project coordinator  
[s.siauve@oieau.fr](mailto:s.siauve@oieau.fr)

Follow us!



#LifeEauClimat



@gesteau



<https://www.gesteau.fr/life-eau-climat>